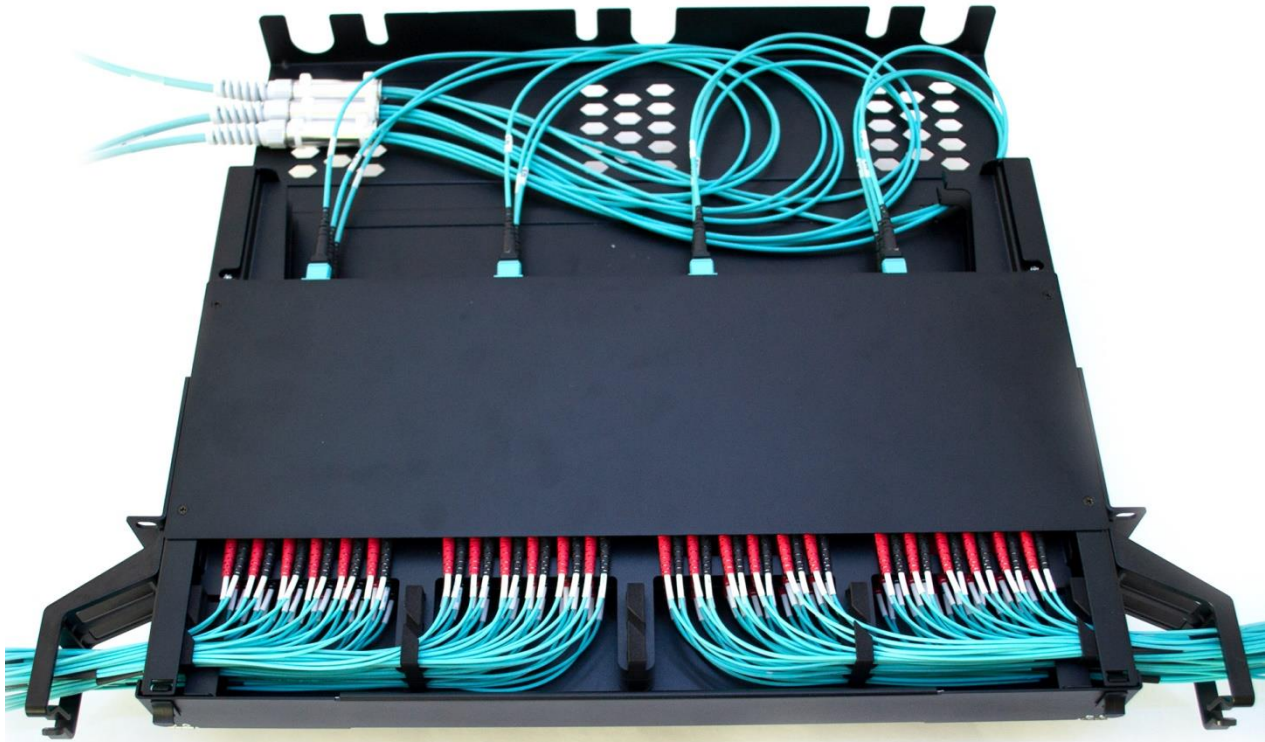


LC single-fibre patch cord cable installation for VERTEX patch panel

This installation guide describes the method of installing LC duplex patch cord cable (N x LCD) into the SYLEX VERTEX panel system.



Installation Guide IG-FOI-009

1. 72x LC patch cord cable installation into 1U VERTEX panel

The MTP backbone cables based on the **IG-FOI-008** work instructions or LC backbone trunk cables patched based on **IG-FOI-010**, or spliced based on **IG-FOI-011** have been installed. The patch panel is ready for installation of the LC patch cords from the front side.

Open the front door of the panel.

Pull out the first drawer "C" from the panel.



Installation Guide IG-FOI-009

Gather the first six LC duplex patch cords.

Remove the dust caps from the last LC duplex adaptor from the second module.

Clean the LC duplex adaptors with the cleaning tool (See **detail** below).

Note: Read Installation guide IG-FOI-000 Optical Connector cleaning procedure



Installation Guide IG-FOI-009

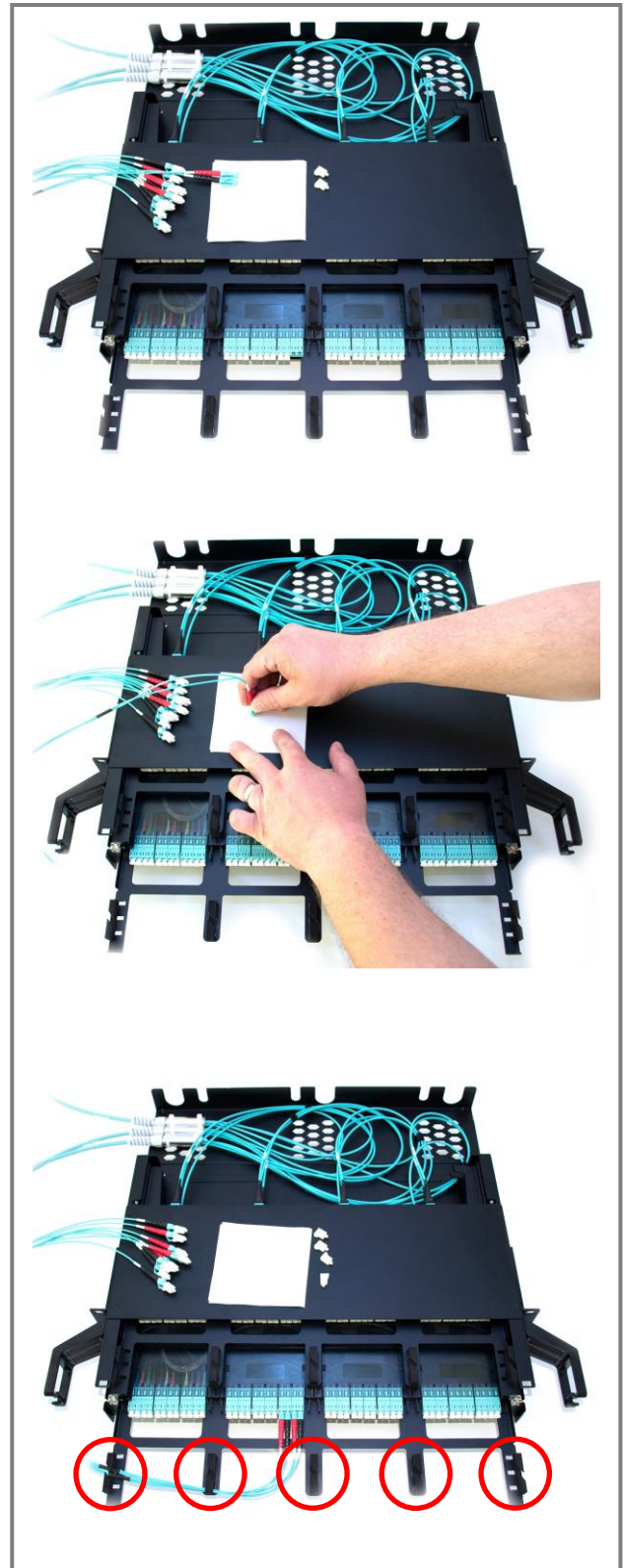
Remove the protective caps from the first LC duplex patch cord and prepare the lint-free cleaning wipes.

Clean the LC duplex connectors on the lint-free wipes.

Note: Read Installation guide IG-FOI-000 Optical Connector cleaning procedure

Once cleaned, plug the LC duplex connectors into the LC duplex adaptor in the second module.

Use the **cable management brackets** between the modules to neatly organise the cables on the drawer.



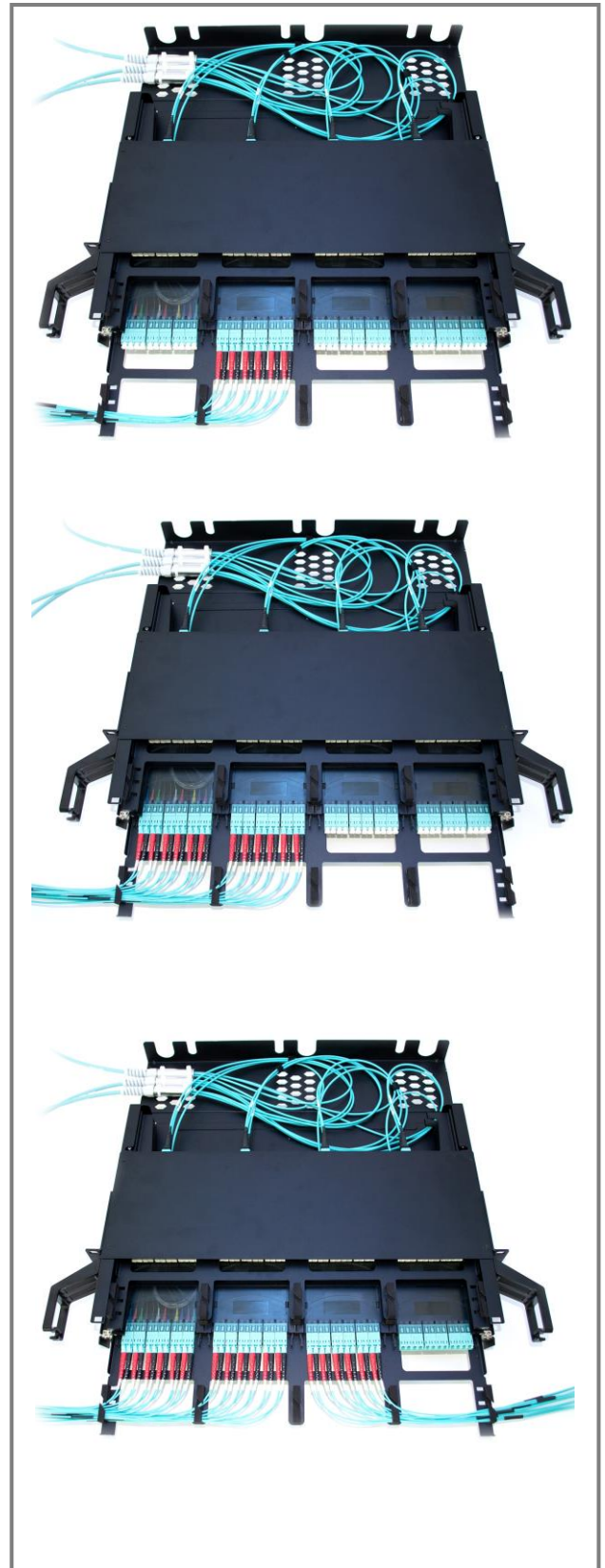
Installation Guide IG-FOI-009

Repeat all above-mentioned steps with each of the remaining five LC duplex patch cords.

The second module is now fully connected.

Repeat all steps on the first module.

Repeat all steps on the third module.

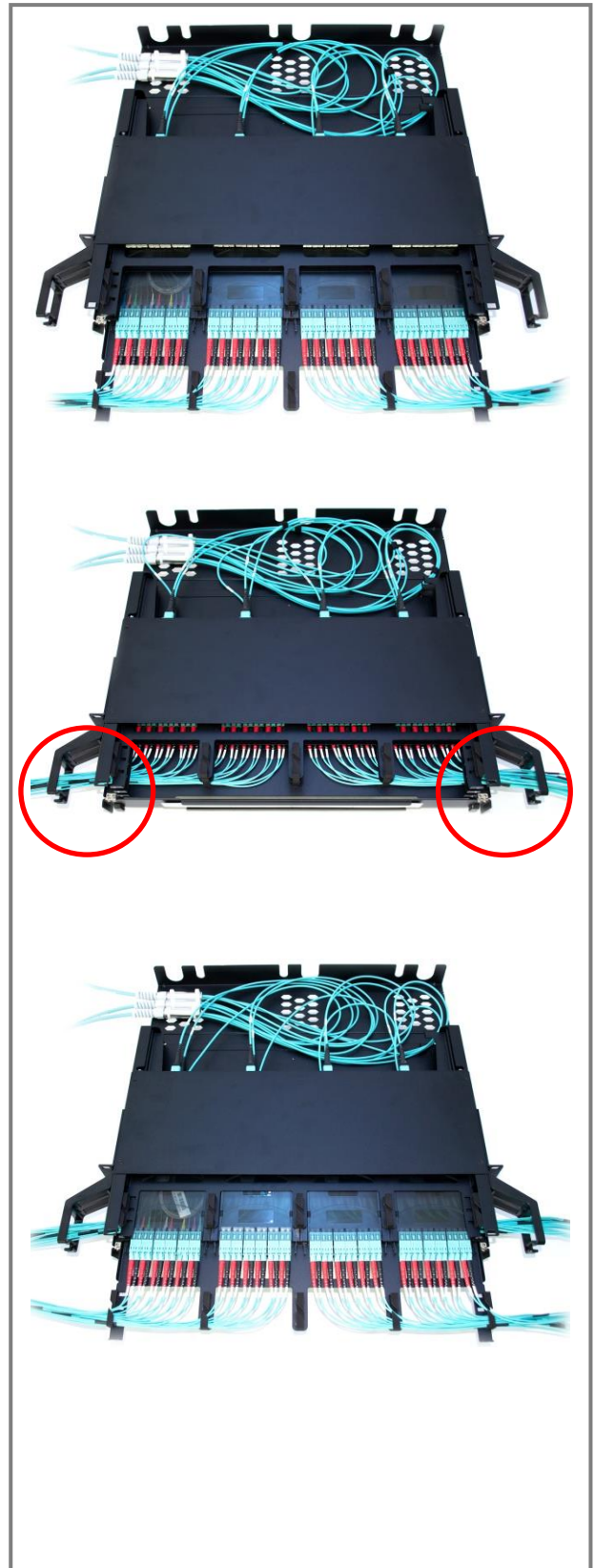


Repeat all steps on the fourth module.
Now drawer "C" is fully connected.

Push drawer "C" back into the panel.

Once the drawer is pushed back into the panel, use the **right and left saddles** for better cable organisation.

Pull out the second drawer "B" from the panel and equip all modules in the same way as for drawer "C".

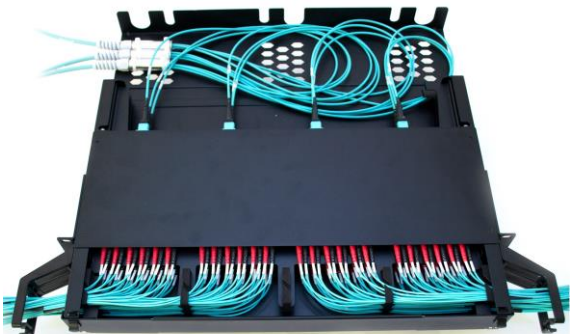


Now drawer “B” is fully connected.

Pull out the third drawer “A” from the panel and equip all modules in the same way as for drawer “B”.

Now drawer “A” is fully connected and the panel is completely equipped with LC duplex patch cords.

Close the front door of the patch panel.



For more information, contact our sales team at sales@sylex.sk