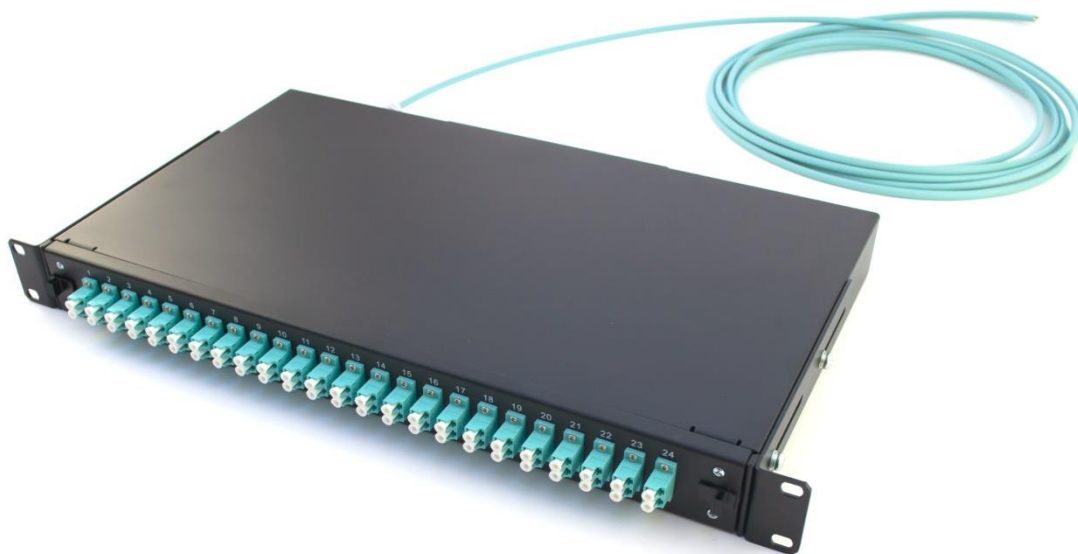


LC multi-fibre trunk cable installation

This installation guide describes the method of installing LC trunk cable (N x LCD) into the SYLEX patch panel.

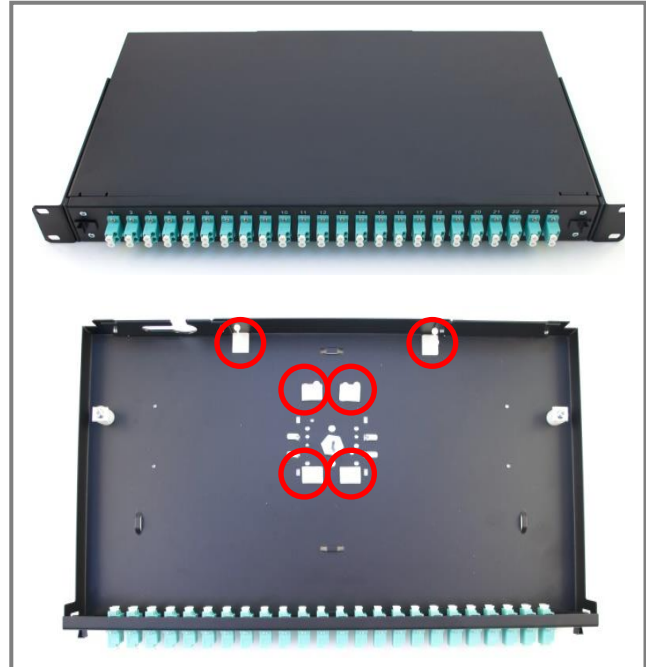


Installation Guide IG-FOI-006

1. 1U Patch panel preparation:

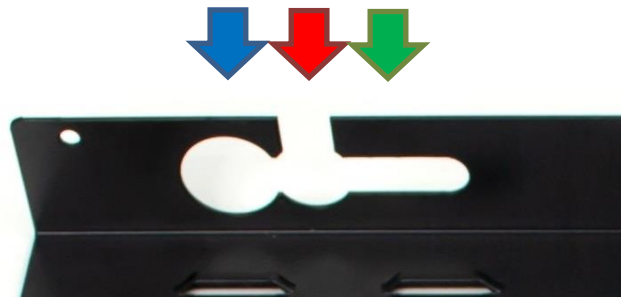
Unpack the 1U panel from the box and remove the top cover from the 1U panel.

Recommended positions of plastic twisters (twisters are not included with the product).



2. Panel information

There is a cut-out for cable entry on both sides of the panel. Through each cut-out, you can install:



Cut-out	Duralino with grommet	Suitable for thread	Hole diameter
1. Green	2x Duralino S or 2x Duralino L	M12 / PG7	Ø12mm
2. Red	N/A	M20 / PG13	Ø21mm
3. Blue	1x Duralino XL	M25 / PG16	Ø26mm

Installation Guide IG-FOI-006

3. 48x LC trunk cable installation into 1U panel

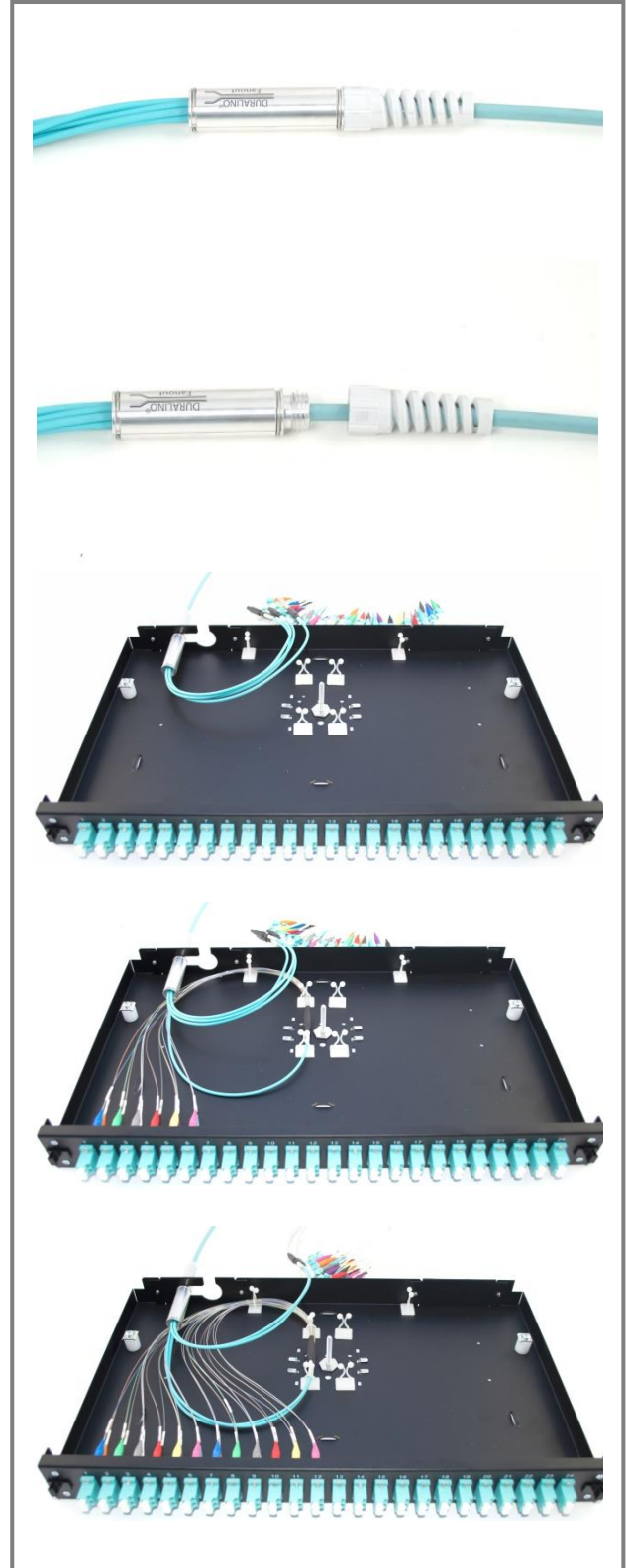
Prepare LC trunk cable for installation.

Partially unscrew the grommet from the Duralino fanout.

Slide the Duralino fanout into the panel cut-out and push it to the middle panel side. Fasten the fanout grommet.

Plug the first 12x LC connectors (No.1 – No.12) into LCD adaptors (No.1 – No.6) based on TIA/EIA 598-A colour coding.

Repeat the same process with the second group of 12x LC connectors (No.13 – No.24) into LCD adaptors (No.7 – No.12).

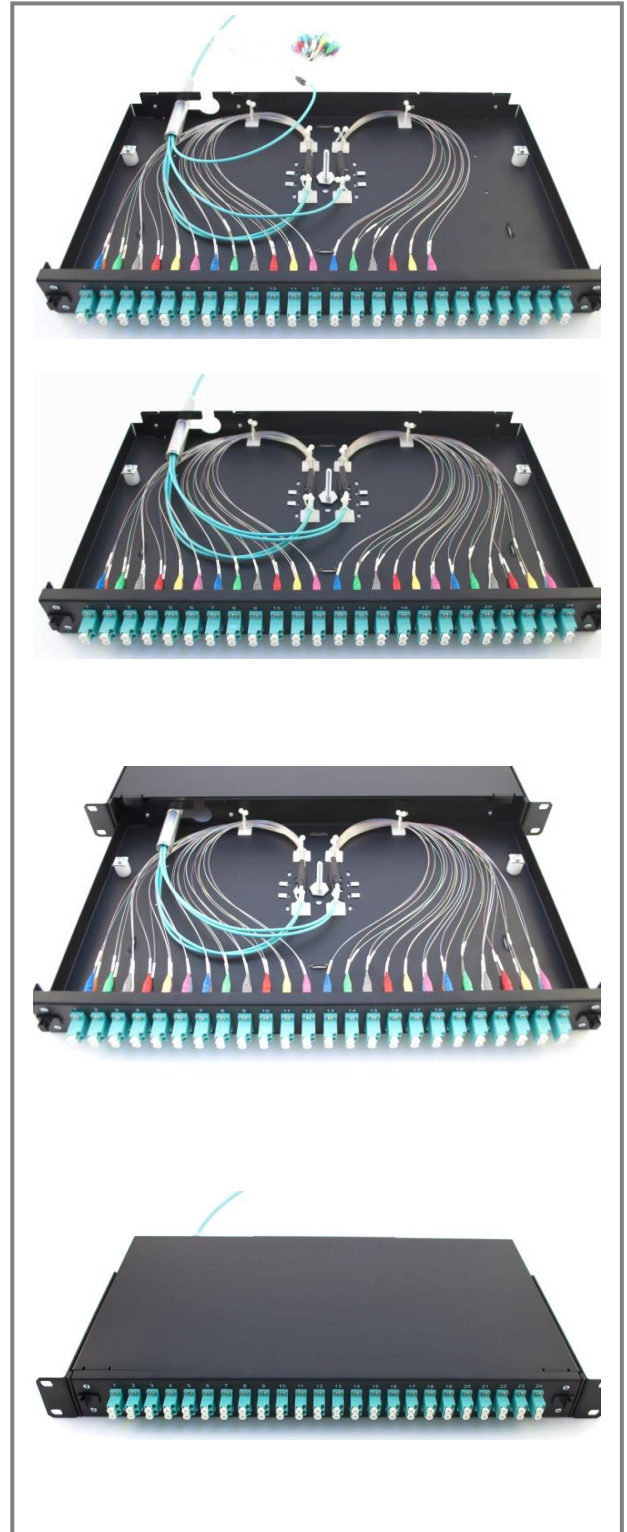


Repeat the same process with the third group of 12x LC connectors (No.25 – No.36) into LCD adaptors (No.13 – No.18).

Repeat the same process with the last group of 12x LC connectors (No.37 – No.48) into LCD adaptors (No.19 – No.24)

Put the top cover back on the 1U patch panel and close the 1U panel.

Your panel with trunk cable is ready to be used.



This installation guide is also applicable for other Sylex trunk cables with cable grommet.

For more information, contact our sales team at sales@sylex.sk