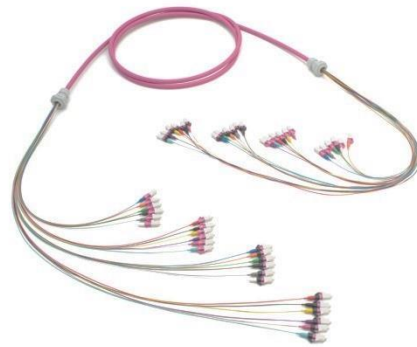


FASTLINK 24-fiber system

This installation guide explains the way of installing Sylex FASTLINK system.

Product information:

- 24-fiber pre-terminated indoor/outdoor, mini breakout (distribution) cable
- Cost-effective patching solution
- Corpull pulling system
- The Corpull pulling system is designed for repeated use during multiple installations
- Made of high-quality, durable material
- 1U 19" black patch panel
- Rack-mount version, with easy and quick-opening system
- Ejected patch panel hangs down at a 40-degree angle and is easily accessible by operating staff
- Front panel - 12 holes, 2xLC, black
- Rectangular back plate



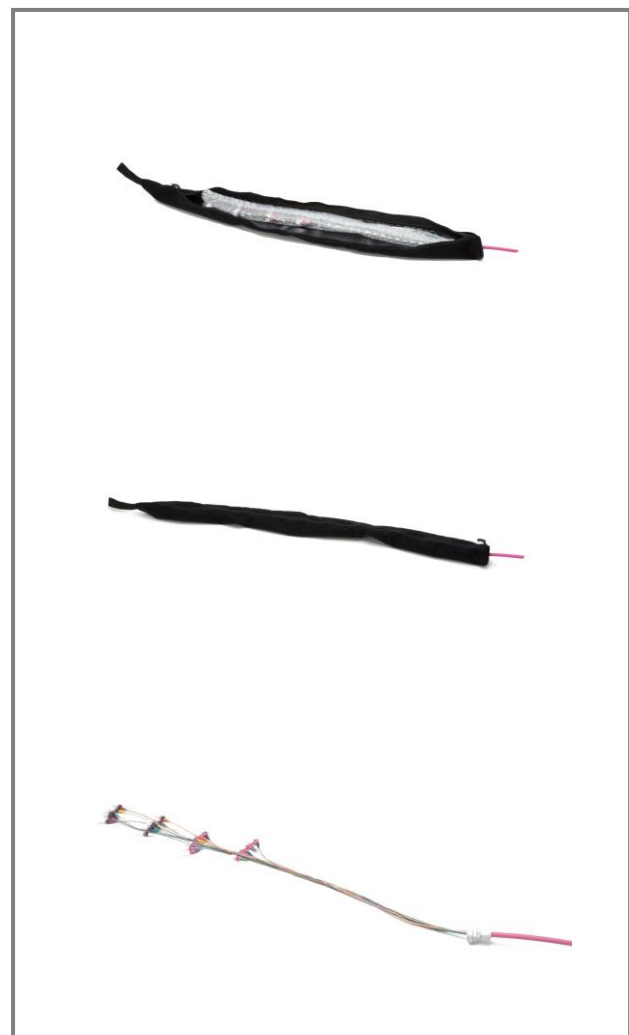
Open the cardboard box and take out the reel with the trunk cable. Cut the cable tie which secures the free tails of the fanout to the cardboard reel flange.



Place the cable (protected by bubble foil) into the Corpull and close the zipper.

After use, remove the cable from the Corpull and remove the bubble foil.

For the detailed Corpull pulling system installation procedure, follow Sylex installation guide IG-FOI-001.



INSTALLING FASTLINK INTO PATCH PANEL

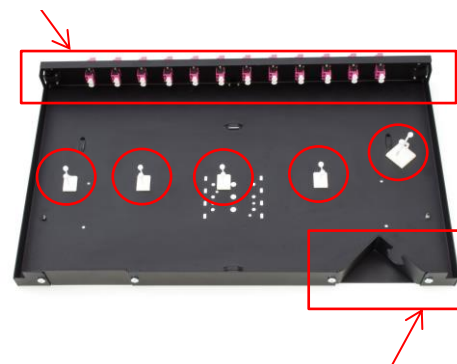
Open the box and take out the patch panel. Open the patch panel.



Patch panel composition:

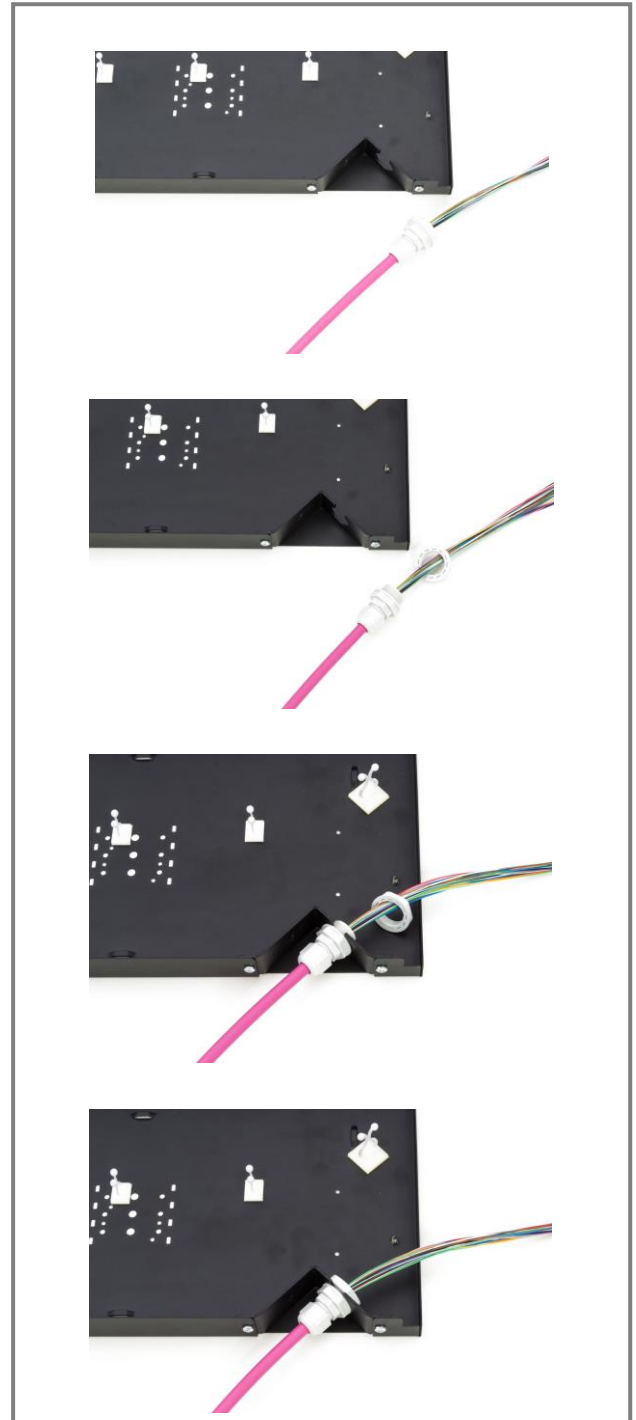
- Body of patch panel
- Front plate with 24 LC duplex adapters
- Rectangular back plate
- One large twister and four small twisters

FRONT PLATE



RECTANGULAR BACK PLATE

Fasten the gland to the rectangular back plate by screwing the gland's nut.



Installation of LC connectors:

Step 1.

Split the 24 fibers into four groups according to colour sequence TIA/EIA-598. The first 12 LC connectors have clips in the same colour as the corresponding connectors' bodies. The second 12 LC connectors have black-coloured clips.

Step 2.

Take the first six fibers and attach them to the large twister, which holds all 24 fibers. Make a loop and attach the six fibers to the nearest small twister.

Step 3.

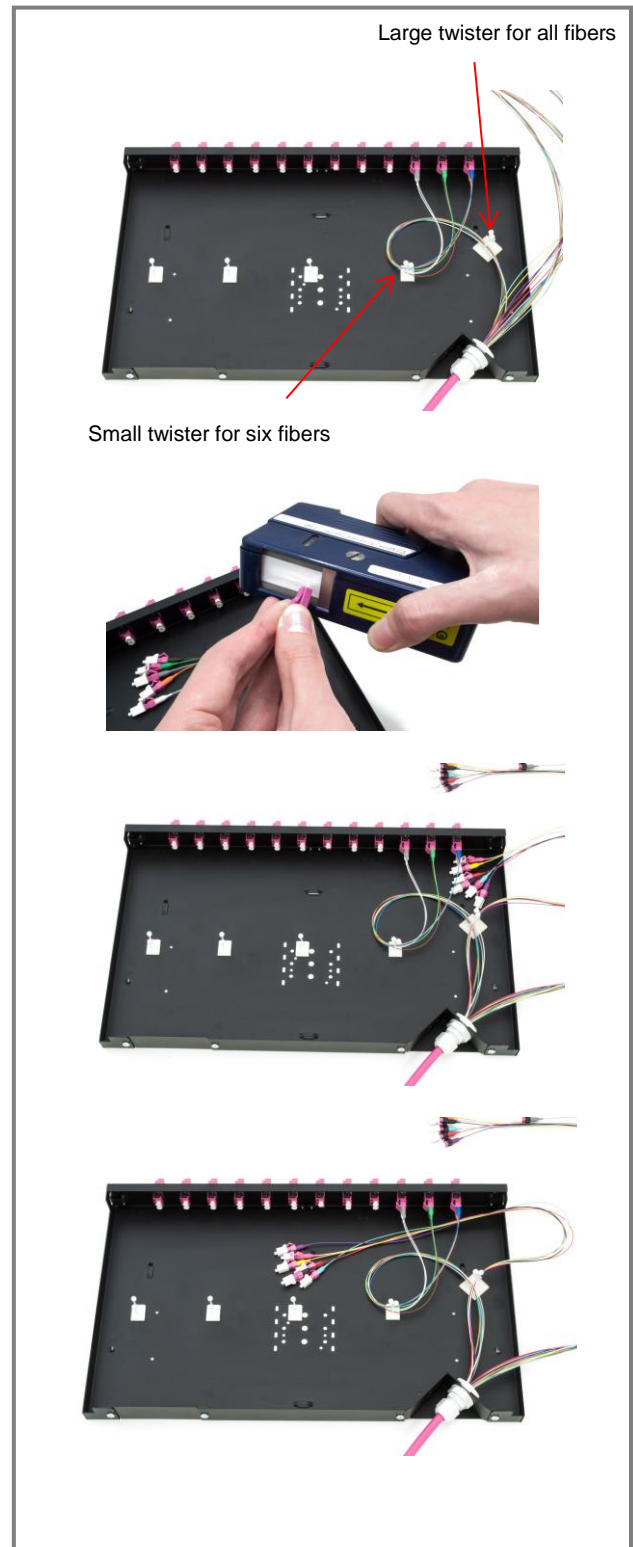
Remove the dust caps from the first six connectors and adapters. Clean the connectors' ferrules using the OPTIPOP before plugging.

Step 4.

Plug the first six connectors into the adapters.

Step 5.

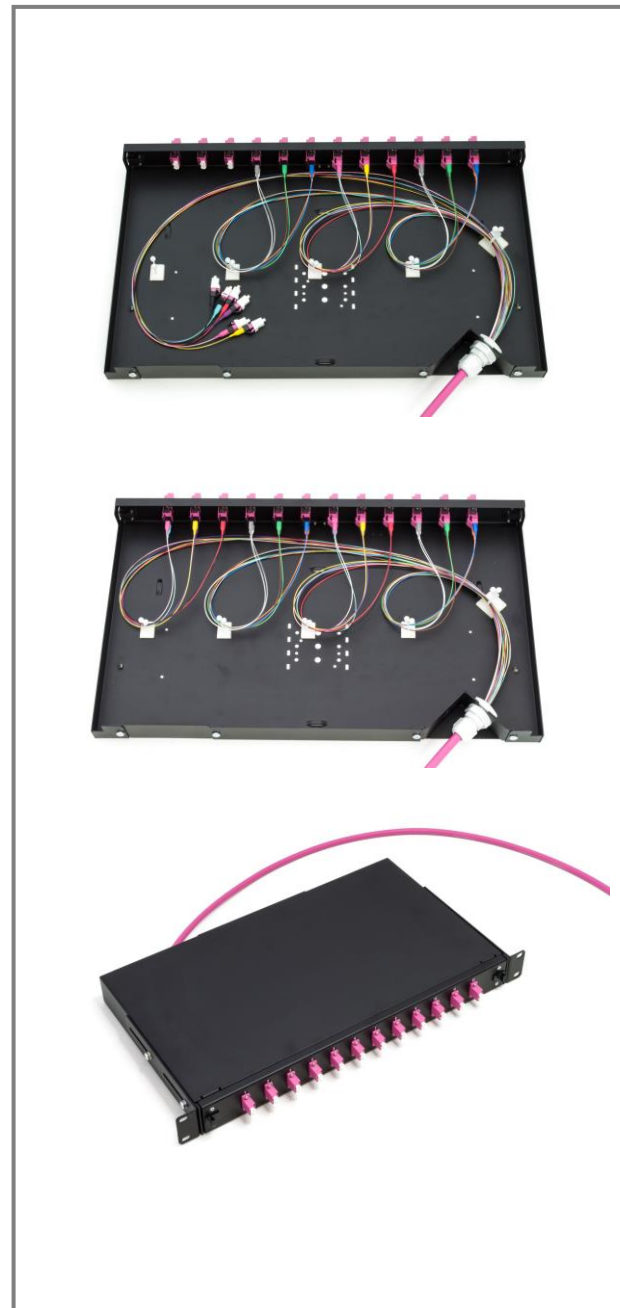
Attach the second six fibers to the large twister. Lead them to the side of the panel under the (already plugged in) connectors.



Repeat steps 3 – 5 for all the following fibers.

Step 6.

Close the patch panel.



Connector boot and latch color sequence for 24-fiber FASTLINK preterm

CONNECTION TABLE						
FIBER LENGTH	LC PORT	BOOT COLOR	LATCH COLOR			
			LC/APC OS2	LC/UPC OS2	LC/PC OM3	LC/PC OM4
420 mm	1	BLUE	GREEN	BLUE	AQUA	MAGENTA
	2	ORANGE				
	3	GREEN				
	4	BROWN				
	5	GRAY				
	6	WHITE				
520 mm	7	RED				
	8	BLACK				
	9	YELLOW				
	10	PURPLE				
	11	PINK				
	12	AQUA				
620 mm	13	BLUE	BLACK	BLACK	BLACK	BLACK
	14	ORANGE				
	15	GREEN				
	16	BROWN				
	17	GRAY				
	18	WHITE				
720 mm	19	RED				
	20	BLACK				
	21	YELLOW				
	22	PURPLE				
	23	PINK				
	24	AQUA				

ANNEX 1: Installation of the FASTLINK 6-fiber preterm

The installation procedure largely mirrors that of the FASTLINK 24-fiber preterm to the 12x LCD patch panel. The difference lies only in the management of fibers in the patch panel. The patch panel consists of one large twister and only one small twister. Gather all six fibers and secure them with the large twister. Make a loop and secure these six fibers to the small twister. Plug them in.

Connector boot and latch colour sequence for 6-fiber FASTLINK preterm

CONNECTION TABLE						
FIBER LENGTH	LC PORT	BOOT COLOR	LATCH COLOR			
			LC/APC OS2	LC/UPC OS2	LC/PC OM3	LC/PC OM4
420 mm	1	RED	GREEN	BLUE	AQUA	MAGENTA
	2	GREEN				
	3	BLUE				
	4	YELLOW				
	5	WHITE				
	6	GREY				

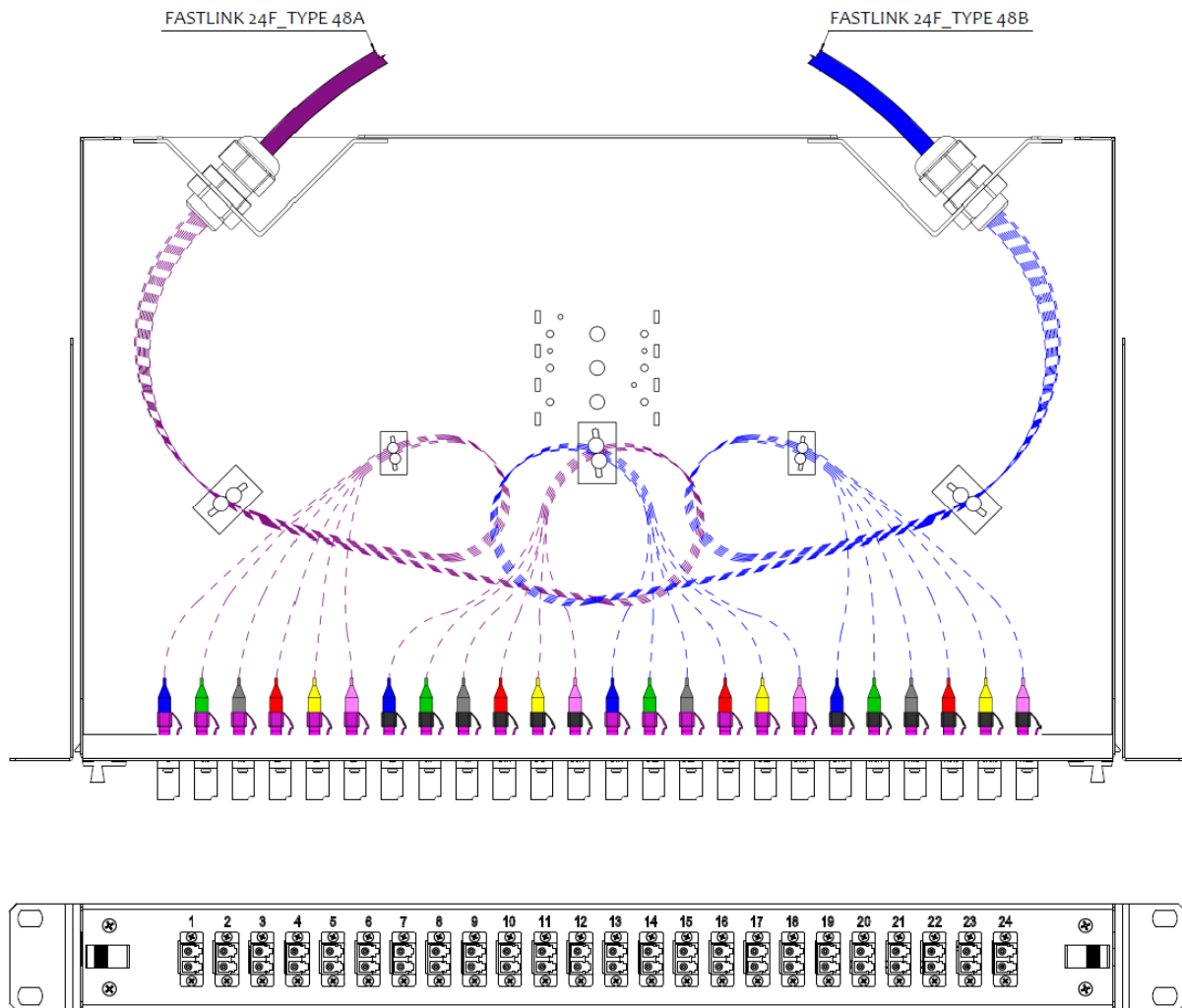
ANNEX 2: Installation of FASTLINK 12-fiber preterm

The installation procedure largely mirrors that of the FASTLINK 24-fiber preterm to the 12x LCD patch panel. The difference lies only in the management of fibers in the patch panel. The patch panel consists of one large twister and only two small twisters. Split the 12 fibers into two groups according to colour sequence TIA/EIA-598. Gather the first 6 fibers and secure them to the large twister. Make a loop and secure the same 6 fibers to the nearest small twister. Plug in the first 6 connectors. Gather the second 6 fibers and secure them to the large twister. Make a loop and secure them to the second, unoccupied small twister. Plug in these six connectors.

Connector boot and latch colour sequence for 12-fiber FASTLINK preterm

CONNECTION TABLE						
FIBER LENGTH	LC PORT	BOOT COLOR	LATCH COLOR			
			LC/APC OS2	LC/UPC OS2	LC/PC OM3	LC/PC OM4
420 mm	1	BLUE	GREEN	BLUE	AQUA	MAGENTA
	2	ORANGE				
	3	GREEN				
	4	BROWN				
	5	GRAY				
	6	WHITE				
520 mm	7	RED				
	8	BLACK				
	9	YELLOW				
	10	PURPLE				
	11	PINK				
	12	AQUA				

ANNEX 3: Installation of two FASTLINK 24-fiber preterms to one FASTLINK 24x LCD patch panel



- The installation procedure largely mirrors that of a single FASTLINK 24-fiber preterm to the 12x LCD patch panel. The difference lies only in the management of cables in the patch panel.
- Take the TYPE 48A FASTLINK preterm (cables pictured in purple). Split the 24 fibers into two groups according to colour sequence TIA/EIA-598. The first 12 LC connectors have clips in the same colour as the corresponding connectors' bodies. The second 12 LC connectors have black-colored clips. Gather the first 12 fibers and secure them to the large twister on the left side. Make a loop and secure these twelve fibers to the nearest small twister. Plug in the first 12 connectors. Gather the second 12 fibers and secure them to the large twister on the left side. Make a loop and secure them to the large middle twister. Plug them in.

- Take the second FASTLINK preterm (TYPE 48B, cables pictured in blue). Split the 24 fibers into two groups according to colour sequence TIA/EIA-598. The first 12 LC connectors have clips in the same color as the corresponding connectors' bodies. The second 12 LC connectors have black-coloured clips. Gather the first 12 fibers and secure them to the large twister on the right side. Make a loop and secure the first 12 fibers to the nearest small twister. Plug in the first 12 connectors. Gather the second 12 fibers and secure them to the large twister on right side. Make a loop and attach them to the large middle twister. Plug them in.

Connector boot and latch colour sequence for two 24-fiber FASTLINK preterms

		CONNECTION TABLE							
		FIBER LENGTH	Fiber	LCD adapter	BOOT COLOR	LATCHES COLOR			
						LC/APC OS2	LC/UPC OS2	LC/PC OM3	LC/PC OM4
PATCHPANEL 24x LC DUPLEX adapter	FASTLINK 24F_TYPE 48A	420 mm	1	1	BLUE	GREEN	BLUE	AQUA	MAGENTA
			2		ORANGE				
			3	2	GREEN				
			4		BROWN				
			5	3	GRAY				
			6		WHITE				
		7	4	RED					
		8		BLACK					
		9	5	YELLOW					
		10		PURPLE					
		11	6	PINK					
		12		AQUA					
	13	520 mm	13	7	BLUE	BLACK	BLACK	BLACK	BLACK
	14		ORANGE						
	15		8	GREEN					
	16			BROWN					
	17		9	GRAY					
	18			WHITE					
	19		10	RED					
	20			BLACK					
	21		11	YELLOW					
	22			PURPLE					
	23		12	PINK					
	24			AQUA					
	FASTLINK 24F_TYPE 48B	520 mm	1	13	BLUE	GREEN	BLUE	AQUA	MAGENTA
			2		ORANGE				
			3	14	GREEN				
			4		BROWN				
			5	15	GRAY				
			6		WHITE				
		7	16	RED					
		8		BLACK					
		9	17	YELLOW					
		10		PURPLE					
		11	18	PINK					
		12		AQUA					
	13	420 mm	13	19	BLUE	BLACK	BLACK	BLACK	BLACK
	14		ORANGE						
	15		20	GREEN					
	16			BROWN					
	17		21	GRAY					
	18			WHITE					
	19		22	RED					
	20			BLACK					
	21		23	YELLOW					
	22			PURPLE					
	23		24	PINK					
	24			AQUA					